



CABLE TIE MOUNTS

TMS
Screw In Saddle Mount



Specifications:

- Material: UL 94 V-2 Nylon 6/6
- Color: Natural

Features:

- Saddle design provides maximum stability to wire bundles
- To apply, simply fix mount with a screw
- RoHS compliant

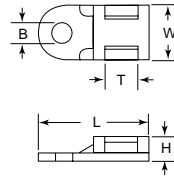


Figure 1

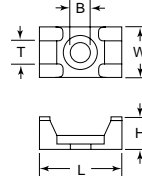


Figure 2

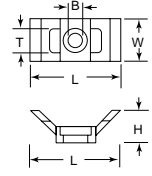


Figure 3



Item No.	Figure	Length		Width		Height		Mounting Hole Ø B		Screw Size	Slot Width T		Use with Cable Tie Classification	Bulk Pack Qty.
		In	mm	In	mm	In	mm	In	mm		In	mm		
TMS001A	1	0.748	19.00	0.374	9.50	0.197	5.00	0.145	3.70	#6 / M3	0.197	5.00	Miniature, Intermediate, Standard	100
TMS002A	2	0.591	15.00	0.394	10.00	0.276	7.00	0.138	3.50	#6 / M3	0.197	5.00	Miniature, Intermediate, Standard	100
TMS003A	2	0.906	23.00	0.630	16.00	0.354	9.00	0.248	6.30	1/4-20 / M6	0.354	9.00	Standard, Heavy Duty	100
TMS005A	3	1.181	30.00	0.579	14.70	0.457	11.60	0.205	5.20	#10 / M5	0.366	9.30	Standard, Heavy Duty	100

FTH-1 / FTH-11
Low Profile Screw Mount Cable Tie Mount



Specifications:

- Material: UL94 V-2 Nylon 6/6
- Color: Natural

Features:

- Mounts with a #8 or M4 flat head screw
- Low profile for limited space
- FTH-11-8-01 secures bundle with multiple cable ties

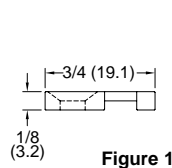


Figure 1

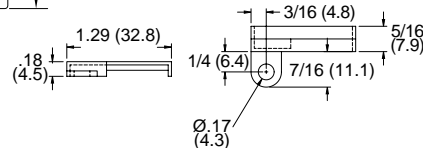


Figure 2

Item No.	Approval	Figure	Used with Cable Ties	Accepts Screw Size	Bulk Pack Qty.
FTH-1-01-M		1	18 - 50 lbs	#8 or M4	1000
FTH-11-8-01		2	18 - 50 lbs	#8 or M4	100

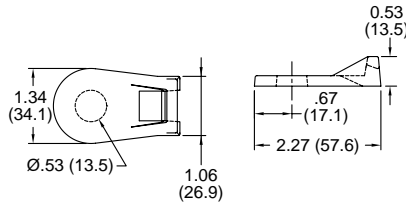
FTH-17
Heavy Duty Screw Mount Cable Tie Mount

Specifications:

- Material: UL94 V-2 Nylon 6/6
- Color: Natural

Features:

- Can be used for ties up to 250 lbs.
- Low profile for tight spaces



Item No.	Accepts Screw Size	Used with Cable Ties	Bulk Pack Qty.
FTH-17-8-01	1/2 (M12)	All Ties	100

FTH-24
Screw Mount Wire Harness
Cable Tie Mount

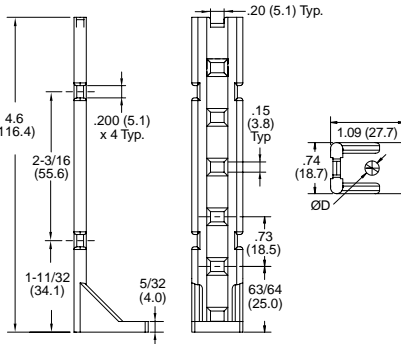


Specifications:

- Material: UL94 V-2 Nylon 6/6
- Color: Natural

Features:

- Allows tying up multiple bundles of cables
- Supports cable bundles above the surface



Item No.	Mounting Method	Approval	D Ø		Used with Cable Ties	Bulk Pack Qty.
			In	mm		
FTH-24-01	#10 or M5 Screw		0.210	5.2	18 - 50 lbs	100
FTH-24-1-01	1/4 or M6 Screw		0.250	6.4	18 - 50 lbs	100